



2 Bedrooms

House

Located
in Cambridge

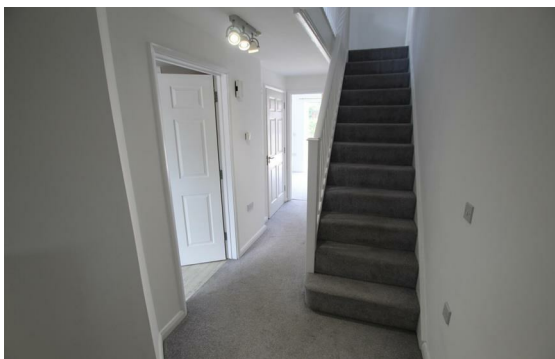
£1,400 PCM



cambridge@morrisarmitage.co.uk

www.morrisarmitage.co.uk

01223 462013



Tucked away in a convenient Cambourne location, this well-presented two-bedroom property offers generous living, a large private garden, and the rare bonus of two allocated parking spaces right next to the house. Ideal for a professional couple or small family.

On the ground floor you'll find a welcoming entrance, a practical downstairs cloakroom/WC, and a spacious living area with room for both lounge and dining setups. The kitchen and living spaces flow towards the generous rear garden, offering plenty of outdoor space.

Upstairs are two comfortable bedrooms and a modern family bathroom, providing a calm and private sleeping area away from the main living space.

Outside, the two private parking spaces are directly beside the property for effortless everyday convenience.

Energy Efficiency Rating: C

Agents Note: Whilst every care has been taken to prepare these particulars, they are for guidance purposes only. All measurements are approximate and are for general guidance purposes only and whilst every care has been taken to ensure their accuracy, they should not be relied upon and potential buyers/tenants are advised to recheck the measurements.



162 Histon Road
Arbury
Cambridge
CB4 3JP

01223 462013

cambridge@morrisarmitage.co.uk

www.morrisarmitage.co.uk