

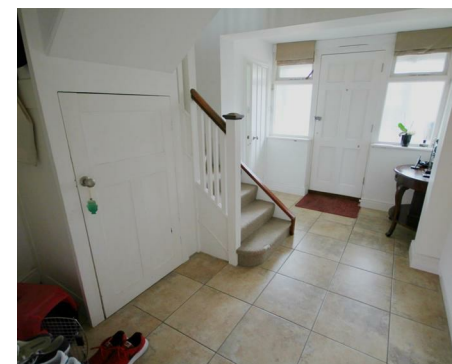


3 Bedrooms

House

Located in

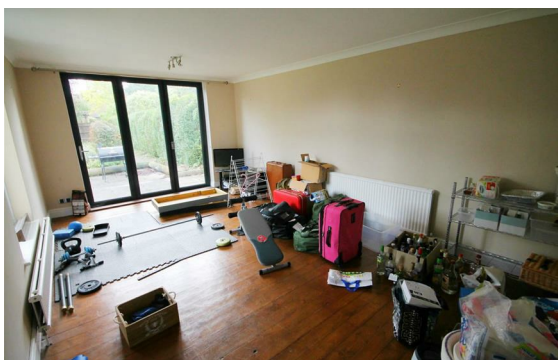
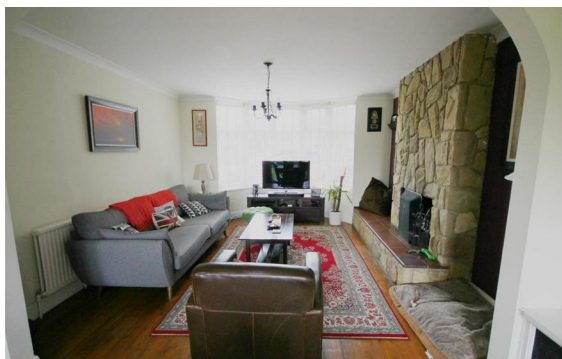
£1,900 PCM



cambridge@morrisarmitage.co.uk

www.morrisarmitage.co.uk

01223 462013



A superbly presented detached family home conveniently located moments from the science park and Cambridge North Station and the A14.

Offering accommodation to include entrance hallway, open plan lounge / dining room with built in book cases and fireplace, refitted kitchen, utility room, separate large reception room, three first floor double bedrooms and family bathroom.

An additional feature of the property is the substantial garden with gardening included and off road parking for numerous vehicles.

Available early November.

Energy Efficiency Rating:

Agents Note: Whilst every care has been taken to prepare these particulars, they are for guidance purposes only. All measurements are approximate and are for general guidance purposes only and whilst every care has been taken to ensure their accuracy, they should not be relied upon and potential buyers/tenants are advised to recheck the measurements.



162 Histon Road
Arbury
Cambridge
CB4 3JP

01223 462013

cambridge@morrisarmitage.co.uk

www.morrisarmitage.co.uk