



4 Bedrooms

House

Located
in Cambridge

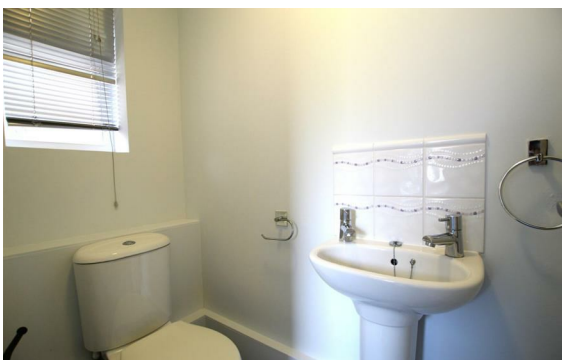
£2,000 PCM



cambridge@morrisarmitage.co.uk

www.morrisarmitage.co.uk

01223 462013



162 Histon Road
Arbury
Cambridge
CB4 3JP

01223 462013

cambridge@morrisarmitage.co.uk

We are bringing to market this large family home in a sought after location, with great links to local amenities and workplaces, nestled in a quiet cul-de-sac.

Lemur Drive is a 4 bedroom property with two double rooms, one with an en-suite, and two single rooms. All of which are serviced by a large family bathroom.

Downstairs there is a large living room, leading through to a spacious kitchen and dining area, all of which fitted with modern appliances, serviced by a downstairs W.C.

To the rear is a fully enclosed garden area, with side access.

Available now.

Energy Efficiency Rating: C

Agents Note: Whilst every care has been taken to prepare these particulars, they are for guidance purposes only. All measurements are approximate and are for general guidance purposes only and whilst every care has been taken to ensure their accuracy, they should not be relied upon and potential buyers/tenants are advised to recheck the measurements.

www.morrisarmitage.co.uk